

TBRHSC: The Path Forward



October 07, 2021

Presented by: Rhonda Crocker Ellacott, President & CEO, TBRHSC and CEO, TBRHRI



TBRHSC: Who We Are

- Designed and funded for 375 Acute Care Beds (operating 433 + 64 ALC/ LTC= 497)
- Regional Academic Health Sciences Centre
- 1 of 24 research hospitals
- Affiliated with Lakehead University & Confederation College. Host training to NOSM and other medical schools
- One of largest employers with 3,400 employees
- \$390 million operational budget

88%

Northwestern Ontario
Patients receive their care
at Thunder Bay Regional
Health Sciences Centre

Thunder Bay Regional Health Sciences Centre

Regional role:

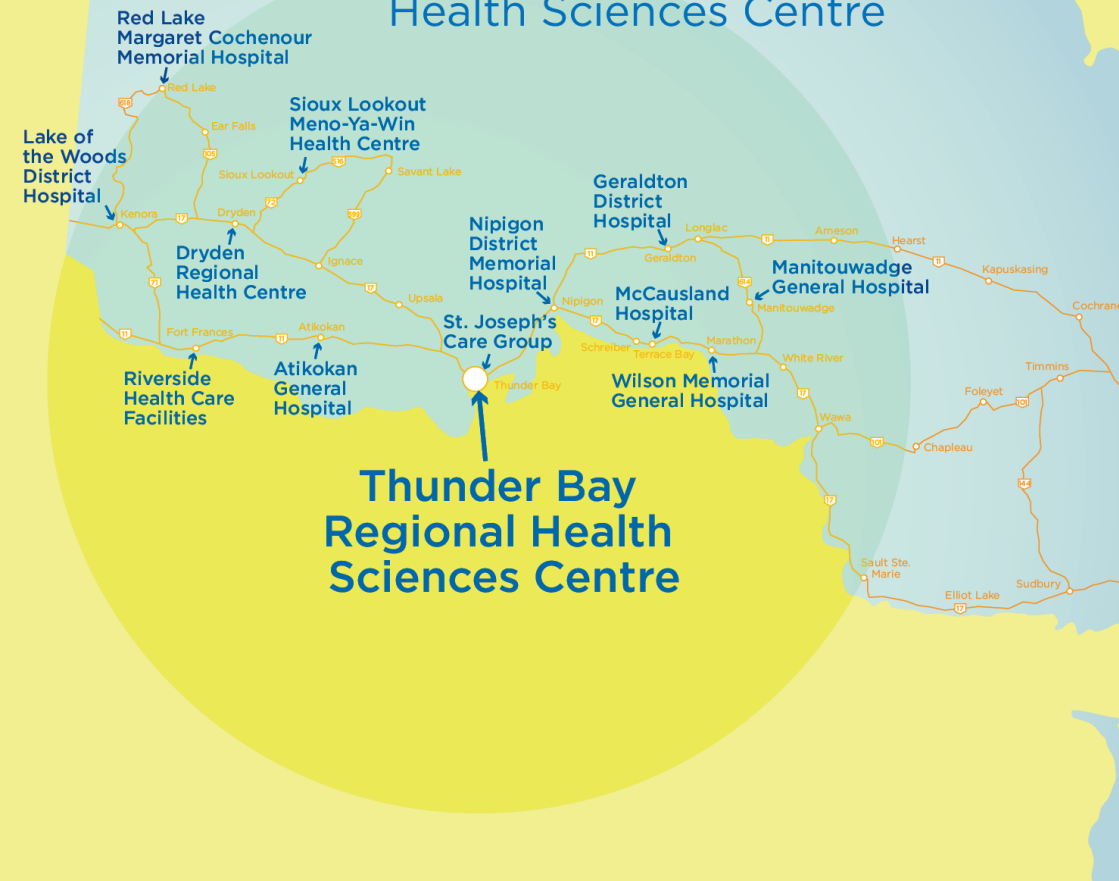
Research, academics

Small hospitals rely on
TBRHSC as a regional referral
centre & for clinical expertise

Serving patients across
a **geographic catchment
area** equivalent to

47%

of Ontario





What We Do

- Only Tertiary Regional Referral Centre for 12 smaller acute care hospitals
- Supporting Regional Critical Care Response to hospitals and Nursing Stations across NW
- One of Busiest Single Site Eds
- ICU Daily rounding
- Regional Trauma Centre
- Regional Specialized Services: Regional Surgical Program, Regional Pharmacy, IT, Renal Services
- Leader in PFCC, Telemedicine
- Current research in urology, cancer, cardiac, stroke, orthopedics, indigenous health, lung disease and smart health technology



Who We Serve

- 250,000 population across a land mass of the size of France – dispersed population
- Catchment 47% of Ontario
Less healthy population, more aged and with higher rates of chronic disease, and greater risk factors than the rest of Ontario
- Significantly lower life expectancy, potential years lost due to avoidable deaths
- Lower access to primary care ...and greater use of hospital services
- Higher rates of suicide, Mental Health and Addictions
- 25% indigenous population served
- 69 FN Communities: 55% of all Ontario FN, 31 Remote Communities

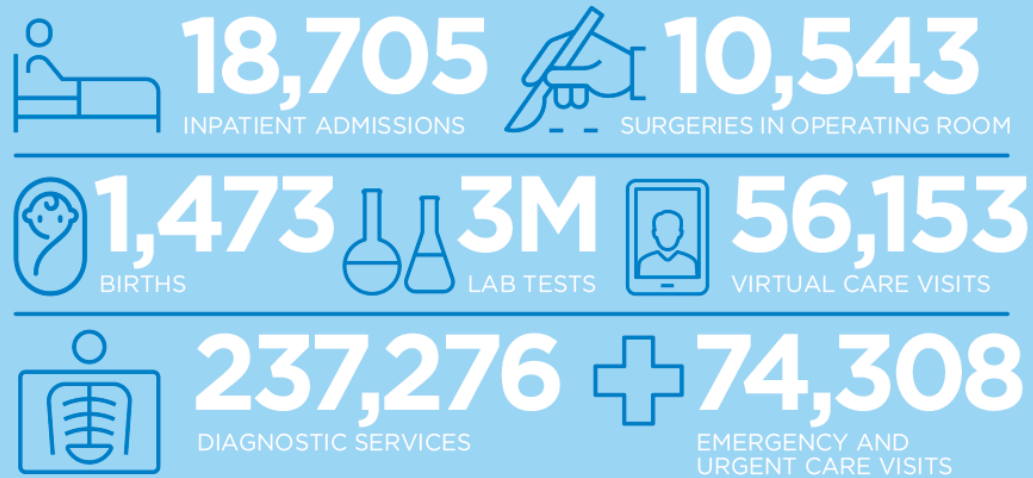
By the Numbers

April 1, 2020 to March 31, 2021

STAFFING



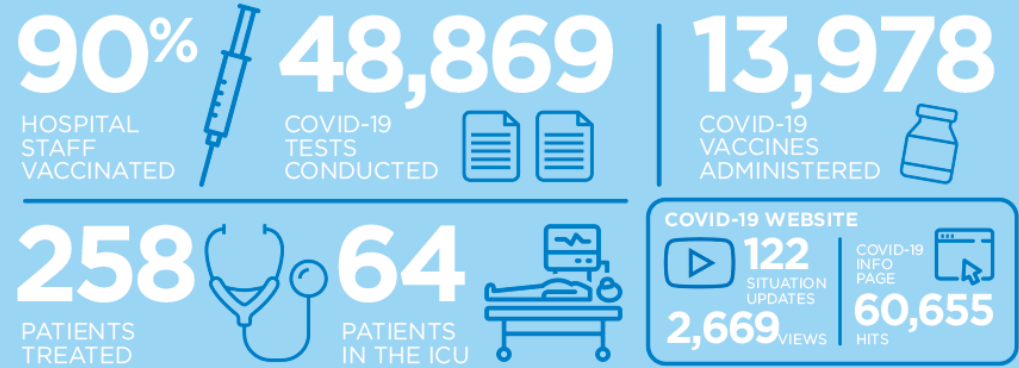
ADMISSIONS & STATS



FUNDING



COVID-19




PERSONAL PROTECTIVE EQUIPMENT (PPE)



SCREEN FOR LIFE COACH




DESPITE THE SHORTENED TRAVEL SEASON WITH THE PANDEMIC THE COACH STILL MANAGED TO TRAVEL TO DRYDEN, ATIKOKAN, GERALDTON, NIPIGON MARATHON



The COVID-19 Pandemic

7

 Thunder Bay Regional Health Sciences Centre



Premier Doug Ford and Minister Greg Rickford Visit TBRHSC (August 2021)



**YOUR
IDEAS.**

OUR PLAN.

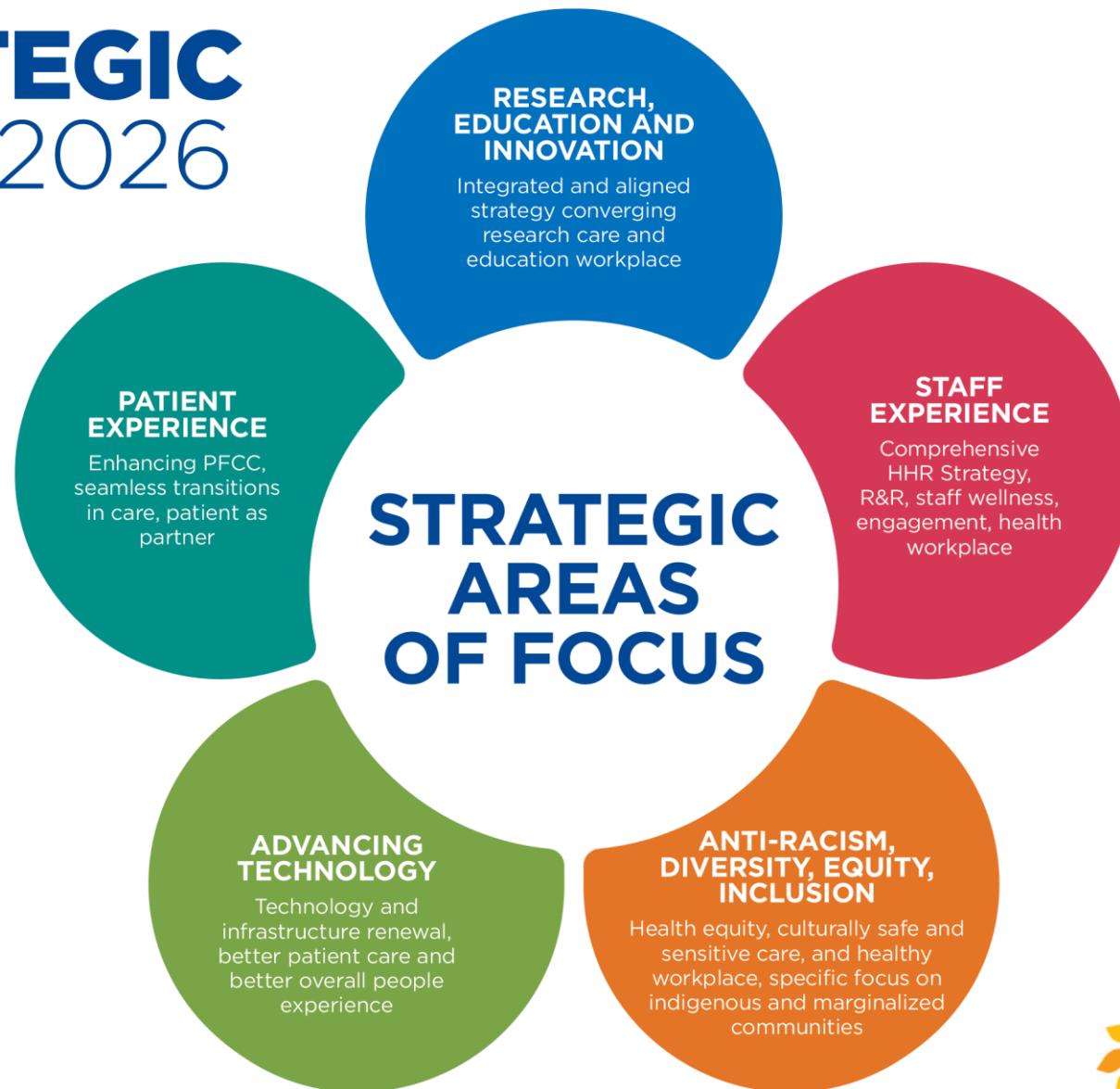
**INSPIRED
CARE.**



**STRATEGIC
PLAN 2026**



STRATEGIC PLAN 2026





Patient Experience





Staff Experience





Anti-Racism, Diversity, Equity, Inclusion





Advancing Technology



A close-up photograph of a microscope's objective lenses and eyepiece, with a gloved hand adjusting the stage. The image is partially obscured by a large, abstract yellow and orange graphic on the right side.

Research, Education and Innovation



Challenges and Opportunities



COVID-19

**Health
Human
Resources**

**Capital
Projects**

Partnerships

**Strategic
Plan 2026**



How Can You Help?

- We need ambassadors
- Support our fundraising efforts
- Get engaged
- Be a champion for TBRHSC, our patients and our staff
 - Share our success stories and provide us with feedback to help us continuously improve the patient care experience

Questions?



Please contact me at 684-6007 or crockerelr@tbh.net

