

Modern Medical Hyperbaric
Medicine Clinic

The Future of Regenerative Medicine in Northwestern Ontario

Presenter: Dr. Meaghan Labine MD, MSc, PhD
CEO and Medical Director



Presentation Overview



Modern Medical Approach to Medicine



- The shift in thinking



- New methods of regenerative medicine therapies



- Hyperbaric medicine



- Deep laser therapy



- Amniotic tissue transplants



- Specialty programs



- Patient resiliency

New Public-Private Medical Models



- Integration of well designed systems and technology



- Market demand



- Designed for Northwestern Ontario



- Models of expansion

Modern Medical: Advances in Medicine



Modern Medical Overview



Re-imagine Medicine

At modern medical our purpose is to re-imagine medicine and to think beyond old algorithms that perpetuate illness as much as they try to cure it.



Newest Clinic & Hyperbaric Oxygen Facility

Modern Medical is the newest medical clinic in Thunder Bay, the Only hyperbaric oxygen facility in Northwestern Ontario and the first regenerative medicine clinic in the region.



Holistic Lense & Non-Invasive Treatments

We approach medicine from a holistic lense, dialing in on the root cause of disease, while offering non-invasive, health canada approved treatments that return functionality and wellness.



Why Healing Needs a New Model

The Current Medical Model:

Medicine has become good at treating disease – but not always at restoring function.

Many patients—especially after cancer treatment, surgery, or chronic injury—are left with tissues that never fully recover.



Beyond Diagnosis:

Diagnosing disease and stabilizing illness are not the same as achieving optimal health and wellness.



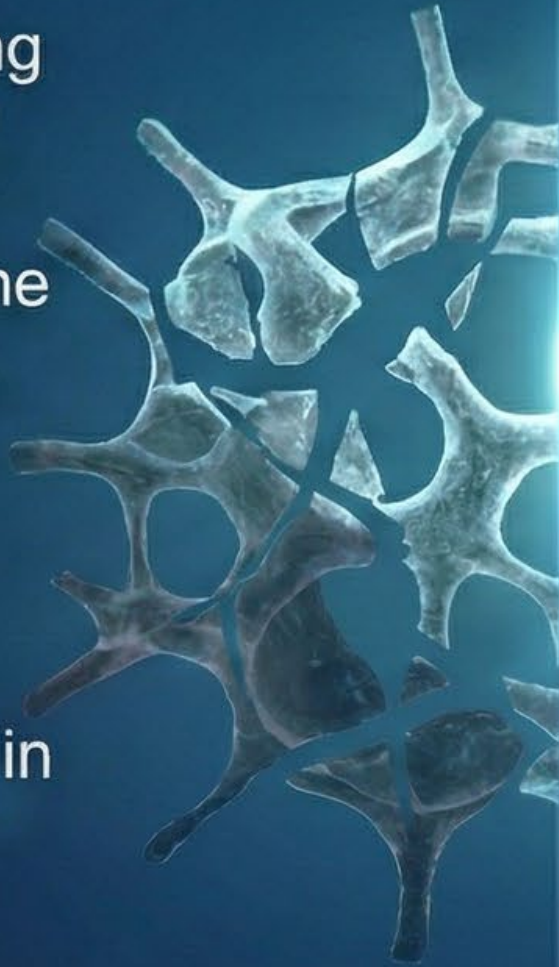
That gap is where regenerative and restorative medicine lives.

A Shift in Thinking

What if Healing isn't Missing - Just Unsupported?

The body has innate healing mechanisms available that support daily function and when optimized can heal the body from incredible injury.

Unfortunately, the signals and healthy environment that trigger innate healing are often lacking, resulting in continued bodily decline.



What Triggers Support Healing?

Oxygen

O₂



Energy

Nutrition



Movement

Modern regenerative medicine focuses on restoring these conditions.

How We Accelerate The Body's Own Healing Systems

Supporting Biology, Not Replacing It

Hyperbaric oxygen therapy

Deep-tissue laser

Regenerative tissue technologies



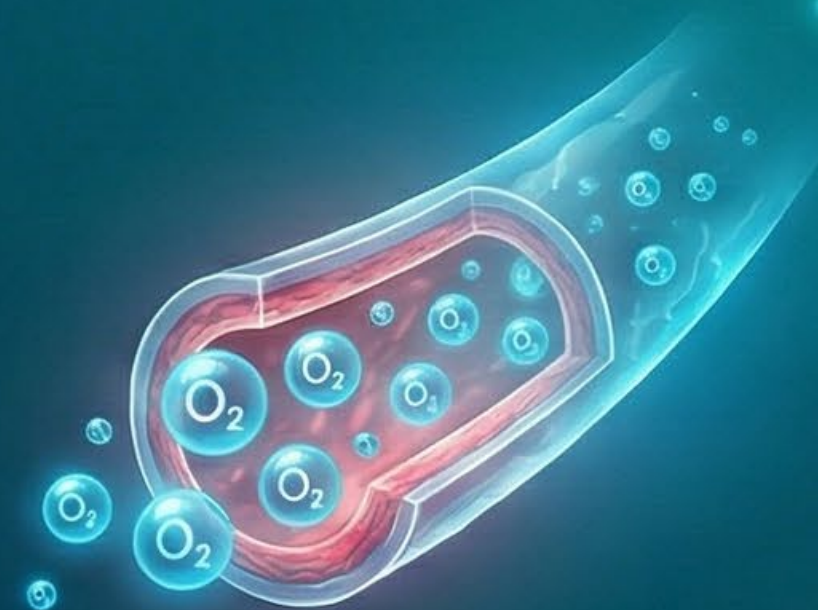
The Science: How HBOT Heals



100% Oxygen



Increased Atmospheric
Pressure (2-3x normal)



Hyper-oxygenation
of blood plasma.



Stimulates natural
healing processes



Mobilizes
stem cells



Grows new blood
vessels (angiogenesis)



Controls inflammation
& fights infection

Healing in Comfort

Northwestern Ontario's state-of-the-art facility features
8 Perry Baromedical SIGMA 36 Chambers.



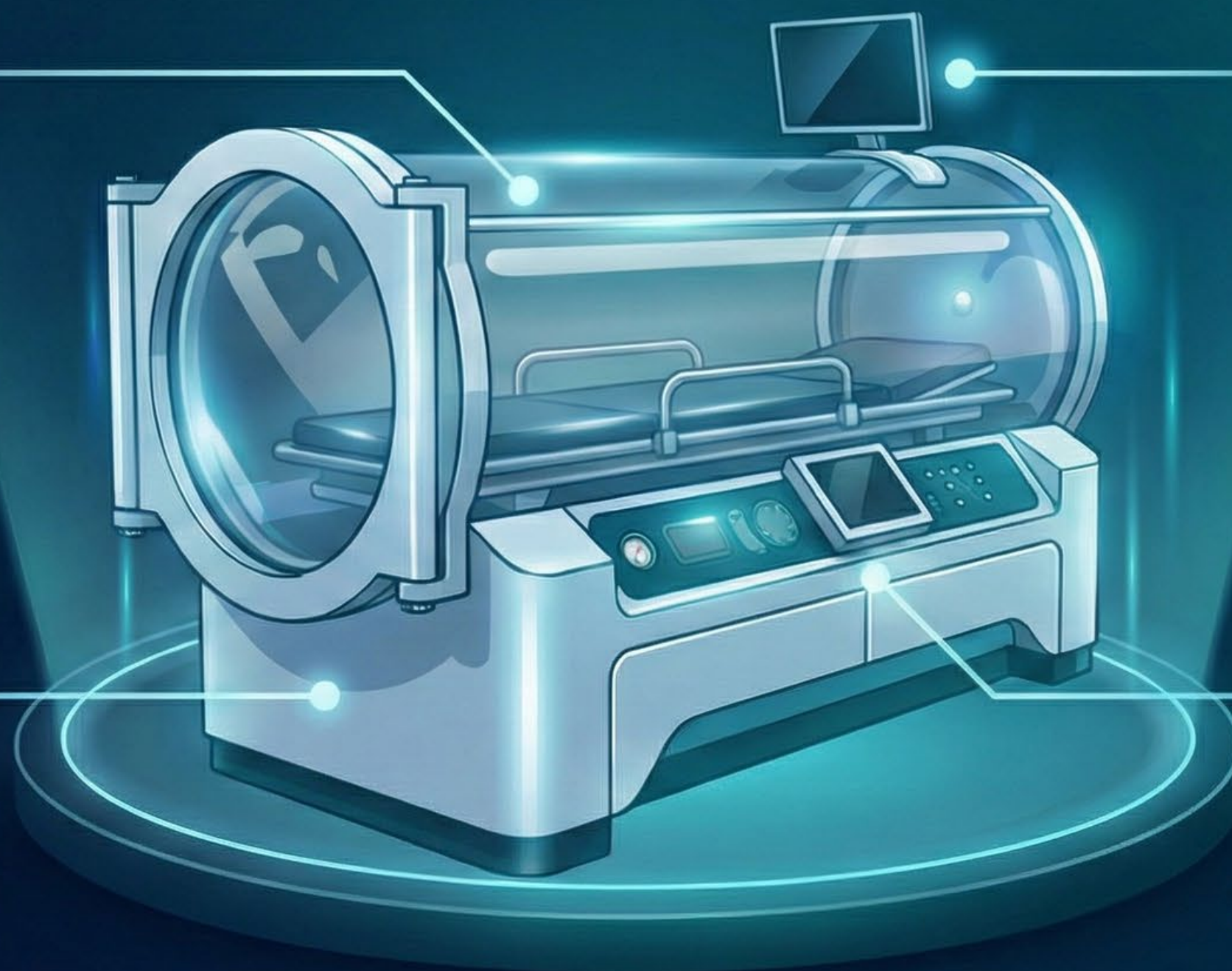
Largest Monoplace
Chamber (36" diameter)



Personal Entertainment
System with TV &
dedicated sound.



Certified for patients
up to 700 lbs.



Physician always on-site
during treatment.

Additive Regenerative Technologies



Deep Laser Technology

Laser therapy is a non-invasive, Class IV photobiomodulation treatment that uses 4 specific, deep-penetrating wavelengths (660–980 nm) to reduce pain, inflammation, and scar tissue while accelerating cellular energy production and tissue repair.



Amniotic Tissue Transplants

Amniotic tissue transplantation uses the innermost layer of the placenta to promote rapid wound healing, reduce inflammation, and minimize scarring.



Specialty Programs

Targeted Regenerative Therapies for Complex Conditions



1) Cancer Rehabilitation Program

Assisting patients after their battle with cancer is over, helping their bodies heal from radiation and chemotherapy damage. We provide added support through expertise, curated treatment protocols, nutritional analysis, and combination of available regenerative therapies.



2) Wound Recovery Program

Offering advanced wound care protocols to patients with difficult to heal wounds despite ongoing wound care and specialist involvement. Combination of advanced tissue technologies with other clinic modalities include hyperbaric and laser treatment.



3) Hearing Loss Recovery Program

We work closely with ENT specialists and have devised a specific program to accelerate hearing recovery when faced with silence.

All programs are OHIP approved for HBOT treatment – ensuring patients have access to exceptional care.

Patient Resiliency Program



Setting a Higher Standard

In healthcare, it's often assumed that only about 30% of patients will fully follow a recommended treatment plan. At Modern Medical, we set a higher standard: we aim for 100%.



Neurocognitive Training

That's why we created the Patient Resiliency Program—a structured approach that applies principles of **neurocognitive training** to strengthen follow-through, improve the patient experience, and support consistent engagement throughout care.



Stronger Clinical Outcomes

The result is higher satisfaction, better adherence to treatment, and ultimately stronger clinical outcomes.



Integrated Patient Journey

This program is integrated into every step of the patient journey—from the first interaction with reception, through the medical consultation, across daily hyperbaric treatments, and continuing beyond the course of care.

Modern Medical:

Advances in Public-Private Medical Models



The New Public–Private Model



The Current Landscape: Defined by Constraints

- **Private clinics:** Structured around the rules and constraints of the OHIP funding framework.
- **Public clinics:** Shaped by government requirements and the same OHIP-driven operational limits.

The system is largely built around **external funding pressures**—capping time, slowing decision-making, and reducing efficiency.



The Modern Medical Alternative: An Elegant Solution

- Patients can access **OHIP**-funded treatments through a high-performing private enterprise.
- **Integrates** the latest **technology** to elevate care delivery.

Reduces the need for long-term patient beds and physician time, delivering speed, precision, and **accountability**.

Our Culture: Operate with excellence, move with efficiency, and deliver a premium patient experience—without compromising access.

Built on a Foundation of Technology and Efficiency



Integrated Tech Stack

We utilize cloud-based platforms like Telus CHR and Google Workspace from the ground up to ensure scalability, oversight, and seamless operations, reducing the time-load on physicians and staff.



Intelligent Automation

We utilize AI solutions to save time and automate routine processes, allowing our expert team to focus on high-value patient interaction and care.



Full-Circle Control

Our in-house OHIP & WSIB billing and in-house automated marketing provide end-to-end control, ensuring efficient processes and clear, consistent patient communication.



Unmatched Adaptability

One of our strongest assets. Our systems and team are built to assess, develop, and deploy solutions to challenges and opportunities at a speed generally unseen in healthcare.

Traction: Validated Market Demand

Immediate uptake proves the urgent need for this level of care in our region.

- **8-chamber** facility fully utilized.



- Treating all 14 OHIP indications simultaneously.
- **Optimization:** Developing efficient flows for complex protocols.

BUILT FOR NORTHWESTERN ONTARIO

Positioning Thunder Bay as a destination for world-class medical innovation.



World-class care delivered close to home.



Reducing travel burdens for Northern patients.



Public-private integration model.






We invite leaders to collaborate.



Thunder Bay
Centre of Excellence

The Hub-and-Spoke Expansion Model

Thunder Bay serves as the central operational hub, enabling efficient regional satellites.

-  **Thunder Bay (HUB):** Centralized administration reduces overhead.
-  **Spokes:** Streamlined clinical sites plugged into the Hub.
-  Ensures consistent protocols across the network.



Summary

In One Breath: A New Model for Healing in Northwestern Ontario



The gap: Treating disease isn't the same as restoring health—too many patients are left “stabilized,” not fully recovered.



The approach: Hyperbaric oxygen + deep-tissue laser + regenerative tissue technologies—wrapped in specialty programs (cancer rehab, wound recovery, hearing recovery) and a **Patient Resiliency** pathway.



The model: A **public–private** design that keeps OHIP-funded care accessible while adding speed, precision, accountability, and a premium experience.



The proof: **8-chamber facility** with rapid demand—~**90%** capacity within **6 months**—and capability to run the full range of OHIP indications.



The scale: Thunder Bay as the **hub**, expanding via hub-and-spoke satellites with consistent protocols, training, QA, and operations.

Close (bottom line): Let's make Thunder Bay the Centre of Excellence for restorative medicine—world-class care, close to home, built to grow.

